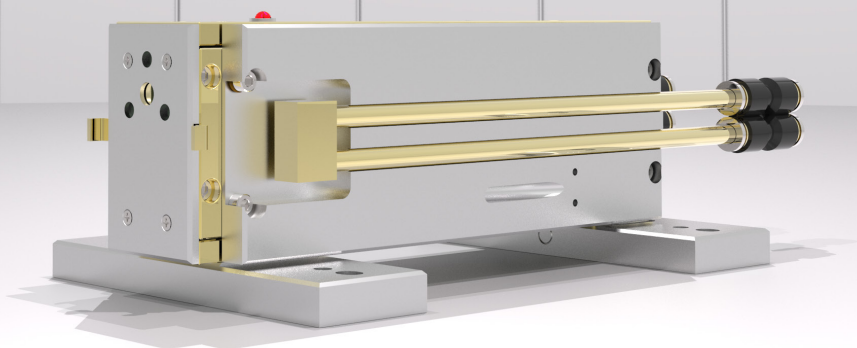


## L3SL



### Laser Power

Wavelength	10.3-10.7 $\mu$ m
CW Power	0.4 W
Peak Power	0.4 W
Power Stability	$\pm 2\%$

### Pulse Width Modulation Parameters

Duty Cycle	0-100 %
Pulse Repetition Frequency	0-100 kHz

### Dimensions & Weight

Laser Weight	1.5 lbs
Dimensions L x W x H	7.6 x 1.5 x 2.5 Inch
RF Driver Weight	0.5 lbs

### Water Cooling

Min Flow Rate	1 LPM (0.264GPM)
Recommended Flow Rate	2 LPM (0.528 GPM)
Max Pressure	2.75bar (450 psi)
Required Chiller Stability	$\pm 0.1^{\circ}\text{C}$
Storage Temp Range	5°C-50°C

### Beam Characteristics

Beam Waist Diameter	2.4 mm
Waist Location	Output Coupler
Mode Quality	$M^2 \leq 1.1$
Full Divergence Angle	5.5 mrad
Rise and Fall time	250 $\mu$ s
Polarization	> 100:1 Linear Horizontal

### DC Power Requirements

RF Driver	12V
-----------	-----

### Heat & Cooling

Heat Dissipation	$\leq 100$ W
Cooling Requirement	Water Cooled
	Closed Loop
Working Temperature	5°C to 40°C

### Notes

Power Stability calculated in CW at thermal equilibrium:

$$+ \frac{P_{max} - P_{min}}{P_{max} + P_{min}}$$

Beam specifications measured at:  $\frac{1}{e^2}$

Average power may exceed listed value. All specifications are measured at the strongest line and are subject to change without notice.



**ACCESS LASER**  
Member of the TRUMPF Group

