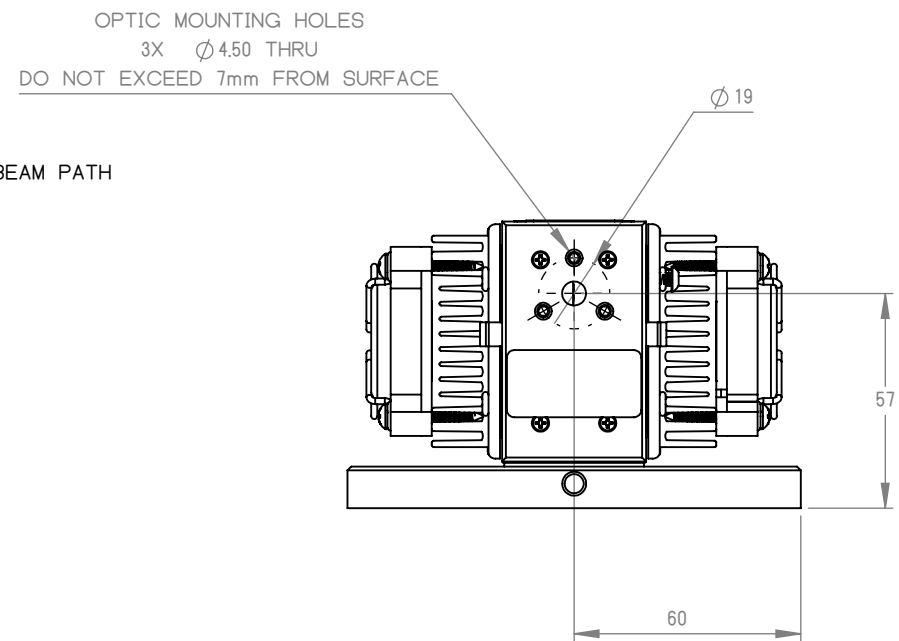
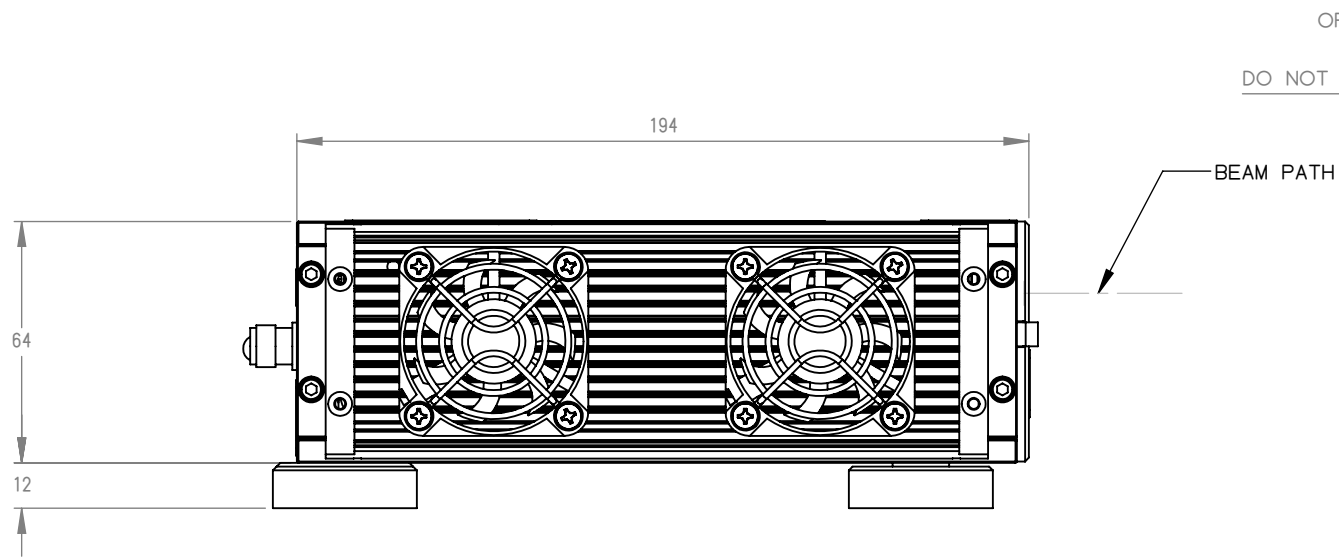


NOTES UNLESS OTHERWISE SPECIFIED:

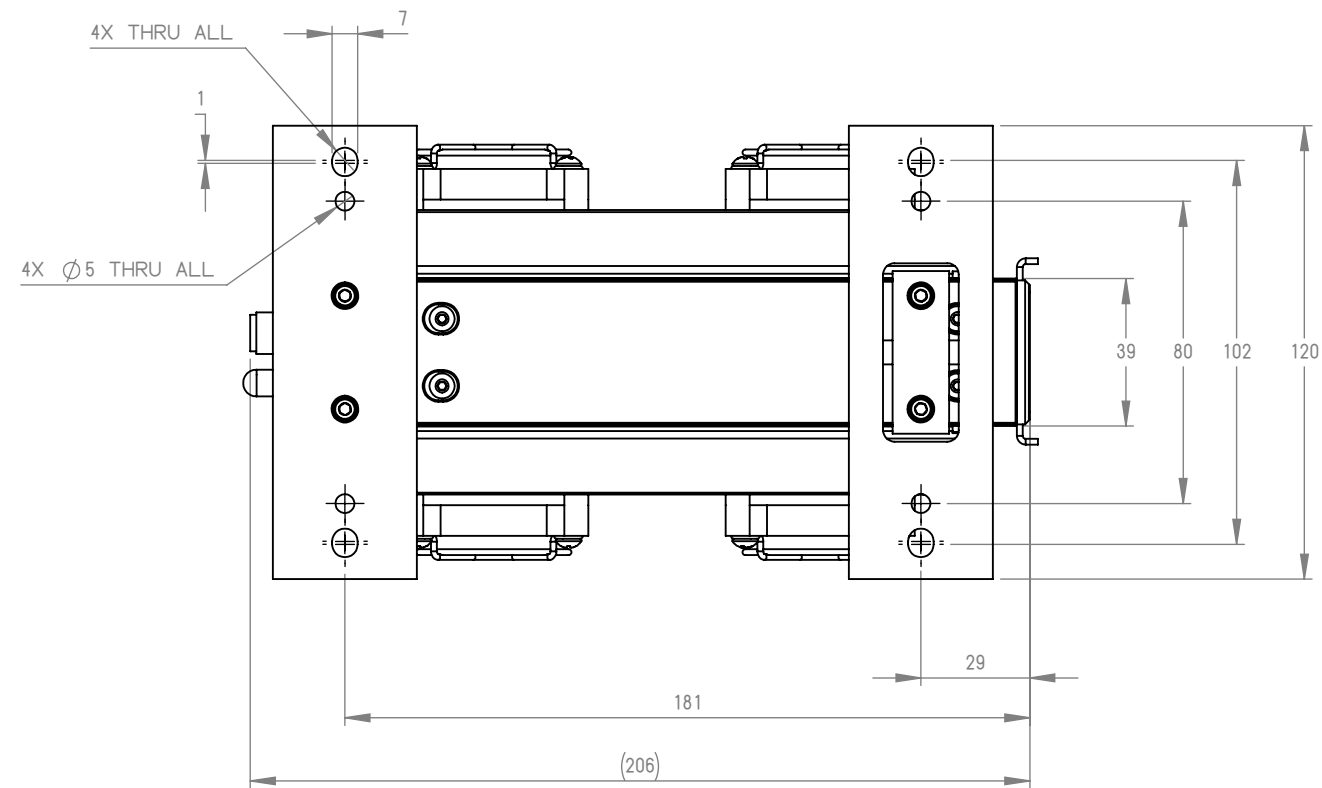
1. DRAWING IS FOR REFERENCE ONLY

REVISIONS					
ECO NUMBER	ZONE	REV.	REVDESCRIPTION	REVBY	REVDATE
REVAPP					

B



A



B

A

**ACCESS LASER**
Member of the TRUMPF Group

Phone: 425-582-8674
Fax: 425-582-8679
www.accesslaser.com/
purchasing@accesslaser.com

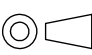
PROPRIETARY AND CONFIDENTIAL

THE INFORMATION CONTAINED IN THIS DRAWING IS THE SOLE PROPERTY OF ACCESS LASER COMPANY. ANY REPRODUCTION IN PART OR AS A WHOLE WITHOUT THE WRITTEN PERMISSION OF ACCESS LASER COMPANY IS PROHIBITED.

TOLERANCE / UNIT	
ISO 2768	
METRIC	
0.0 UP TO 0.5:	±0.1
0.5 UP TO 6:	±0.1
< 6 UP TO 30:	±0.2
< 30 UP TO 120:	±0.3
< 120 UP TO 400:	±0.5
< 400 UP TO 1000:	±0.8
ANGULAR:	±0°20'

RESERVED

FINISH	
MATERIAL	
DESIGNED BY	
DRAWN BY	3/13/2023
CHECKED BY	
APPROVED BY	

THIRD ANGLE PROJECTION	SURFACE FINISH
	
DRAWING SHALL BE IN ACCORDANCE WITH ASME Y14.5-2009	

PART NO. 891-02201-001	REV
DESCRIPTION: L3S Laser, FCCL 12V	A.01
DO NOT SCALE DRAWING	SCALE 1:2
SHEET 1 OF 1	SIZE B