

4

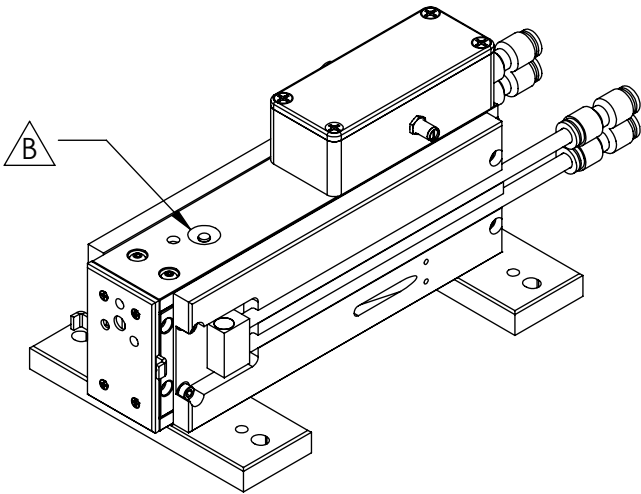
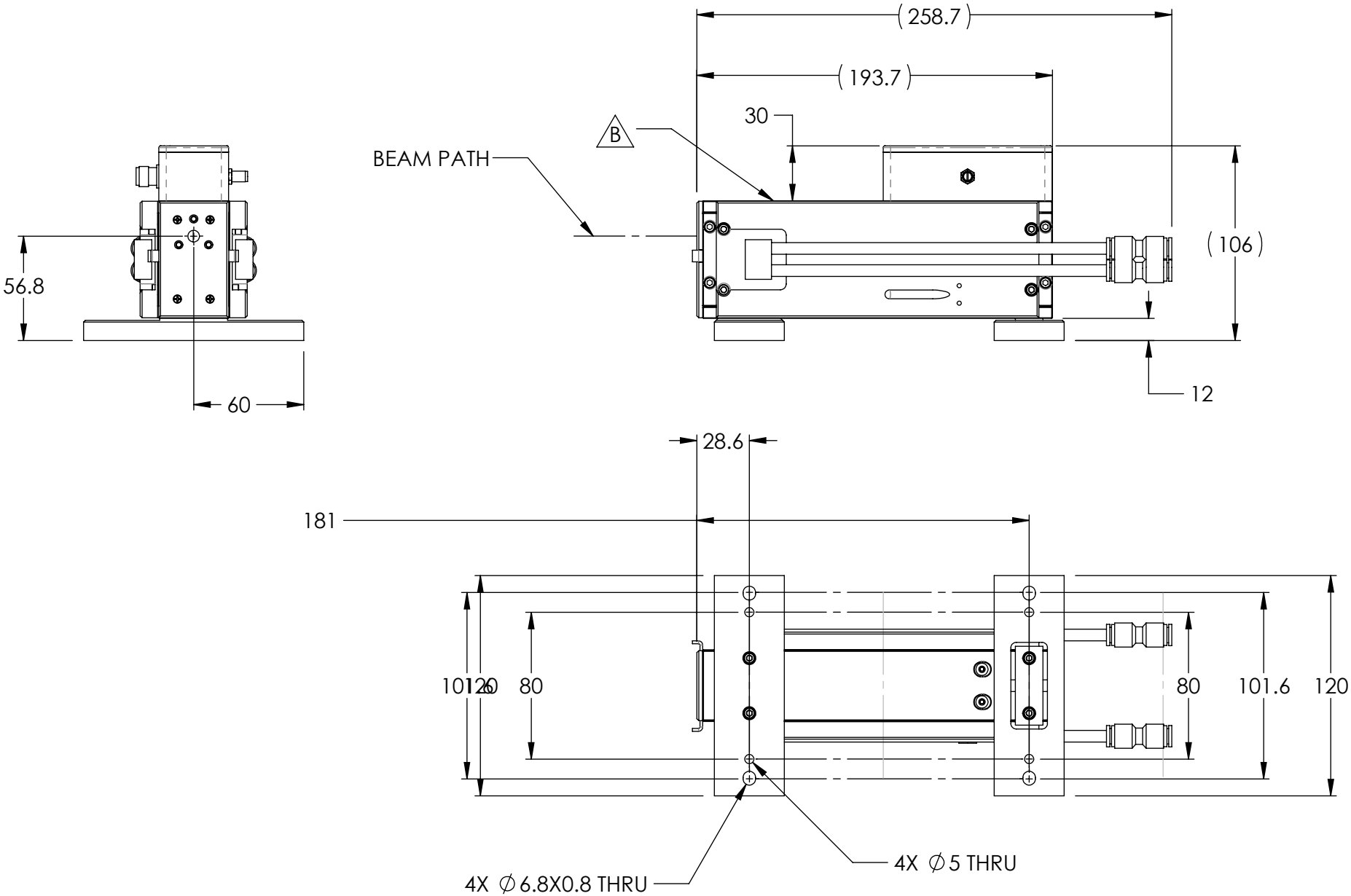
3

2

1

REVISION HISTORY					
ECO	ZONE	REV	DESCRIPTION	DATE	APPROVED
		B	NEW TOP COVER AND LED LIGHT		

- NOTES UNLESS OTHERWISE SPECIFIED:
- BREAK ALL SHARP EDGES AND CORNERS. NO BURRS ALLOWED.
 - NO VISIBLE DENTS, SCRATCHES AND NON-UNIFORMITY.





ACCESS LASER
Member of the TRUMPF Group

Phone: 425-582-8674
Fax: 425-582-8679
www.accesslaser.com/
purchasing@accesslaser.com

PROPRIETARY AND CONFIDENTIAL

THE INFORMATION CONTAINED IN THIS DRAWING IS THE SOLE PROPERTY OF ACCESS LASER COMPANY. ANY REPRODUCTION IN PART OR AS A WHOLE WITHOUT THE WRITTEN PERMISSION OF ACCESS LASER COMPANY IS PROHIBITED.

TOLERANCE / UNIT		DRAWN BY	AD	THIRD ANGLE PROJECTION	PART NO. 891-02301-006	REV B			
ISO 2768	ASME Y14.5-2009								
METRIC	INCHES	CHECKED BY		SURFACE FINISH	DESCRIPTION: L3SL LASER, WC 12V				
0.5 UP TO 6 : ±0.1	.x ± .1	APPROVED BY							
< 6 UP TO 30 : ±0.2	.xx ± .01	FINISH							
< 30 UP TO 120 : ±0.3	.xxx ± .005	MATERIAL		DRAWING SHALL BE IN ACCORDANCE WITH ASME Y14.5-2009		DO NOT SCALE DRAWING	SCALE 1:3	SHEET 1 OF 1	SIZE B
<120 UP TO 400 : ±0.5									
< 400 UP TO 1000 : ±0.8									
	FRACTIONAL ± 1/64								
	BEND: ± .3								
ANGULAR: MACH ±0°20'	ANGULAR: MACH ± 0°.5'								

4

3

2

1