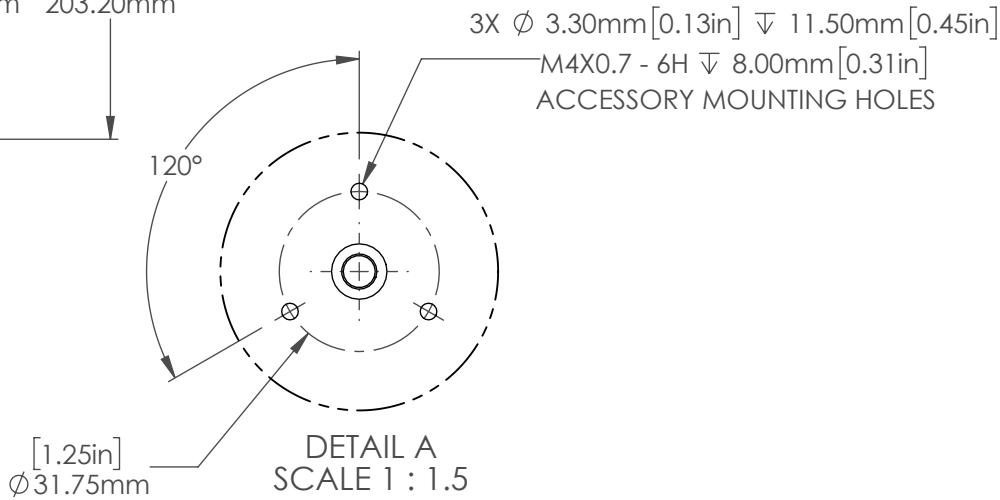
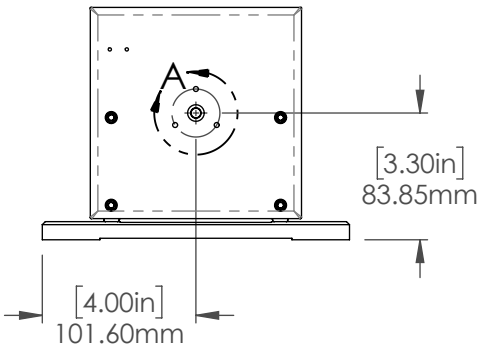
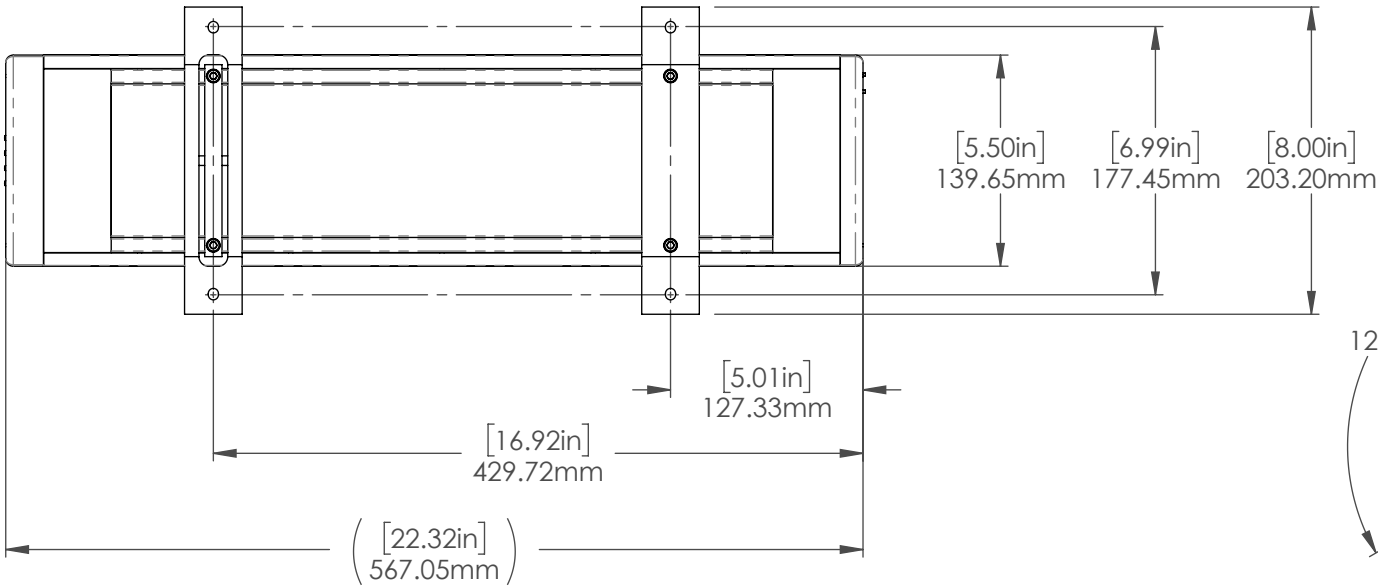
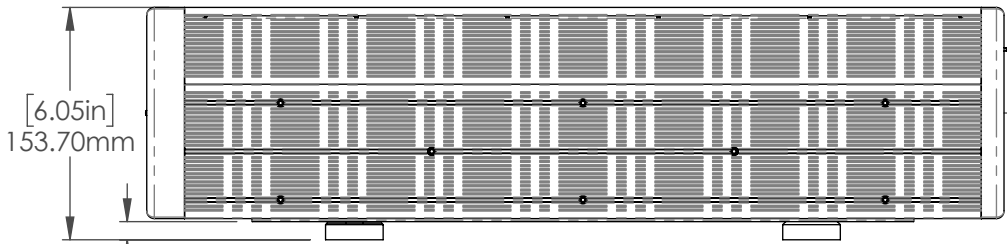
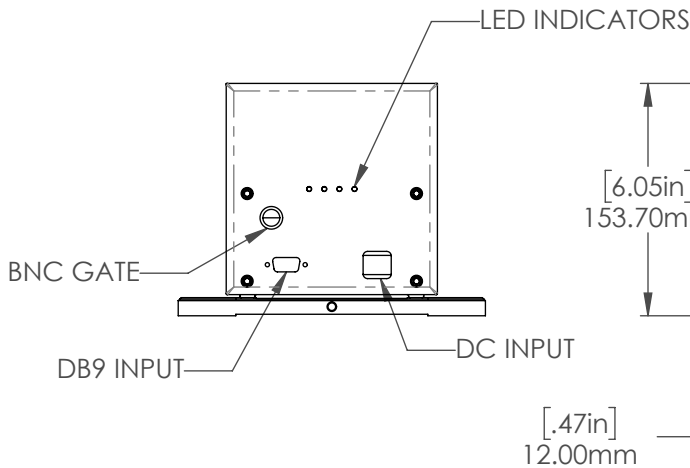


B

A



- NOTES UNLESS OTHERWISE SPECIFIED:
1. DRAWING IS FOR REFERENCE ONLY
 2. FOR ALL UNDEFINED FEATURES REFERENCE THE MODEL



ACCESS LASER
Member of the TRUMPF Group

Phone: 425-582-8674
Fax: 425-582-8679
www.accesslaser.com/
purchasing@accesslaser.com

PROPRIETARY AND CONFIDENTIAL

THE INFORMATION CONTAINED IN THIS DRAWING IS THE SOLE PROPERTY OF ACCESS LASER COMPANY. ANY REPRODUCTION IN PART OR AS A WHOLE WITHOUT THE WRITTEN PERMISSION OF ACCESS LASER COMPANY IS PROHIBITED.

TOLERANCE / UNIT			
ISO 2768		ASME Y14.5-2009	
METRIC		INCHES	
0.5 UP TO 6 :	±0.1	.x	± .1
< 6 UP TO 30 :	±0.2	.xx	± .01
< 30 UP TO 120 :	±0.3	.xxx	± .005
< 120 UP TO 400 :	±0.5		
< 400 UP TO 1000 :	±0.8	FRACTIONAL	± 1/64
		BEND:	± .3
		ANGULAR: MACH	± 0° 5'
ANGULAR: MACH	± 0° 20'		

DRAWN BY	AD
CHECKED BY	
APPROVED BY	
FINISH	
MATERIAL	

THIRD ANGLE PROJECTION
SURFACE FINISH

PART NO.	REV
898-16015-000	
DESCRIPTION:	
DL500 Laser, Integrated RF, AC 48V OEM	
DRAWING SHALL BE IN ACCORDANCE WITH ASME Y14.5-2009	DO NOT SCALE DRAWING
SCALE 1:4	SHEET 1 OF 1
SIZE B	

4

3

2

1

B

A